



MONTHLY MEMBERSHIP PROGRESS REPORT

Results as of: 5/31/2015

Multiple District 321

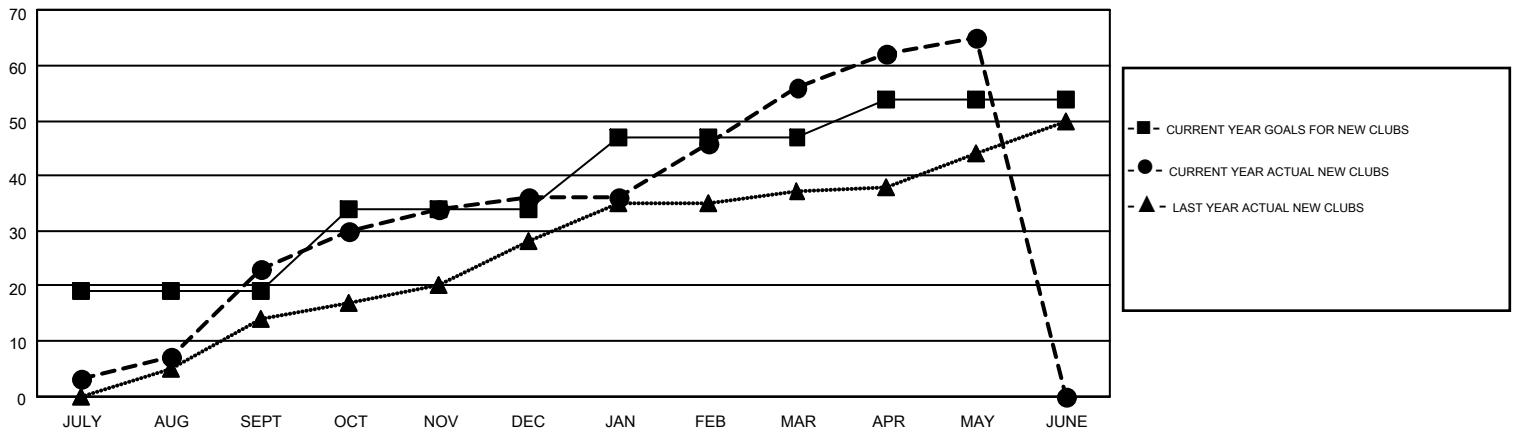
LOCATION: INDIA

GMT: V S KUKREJA

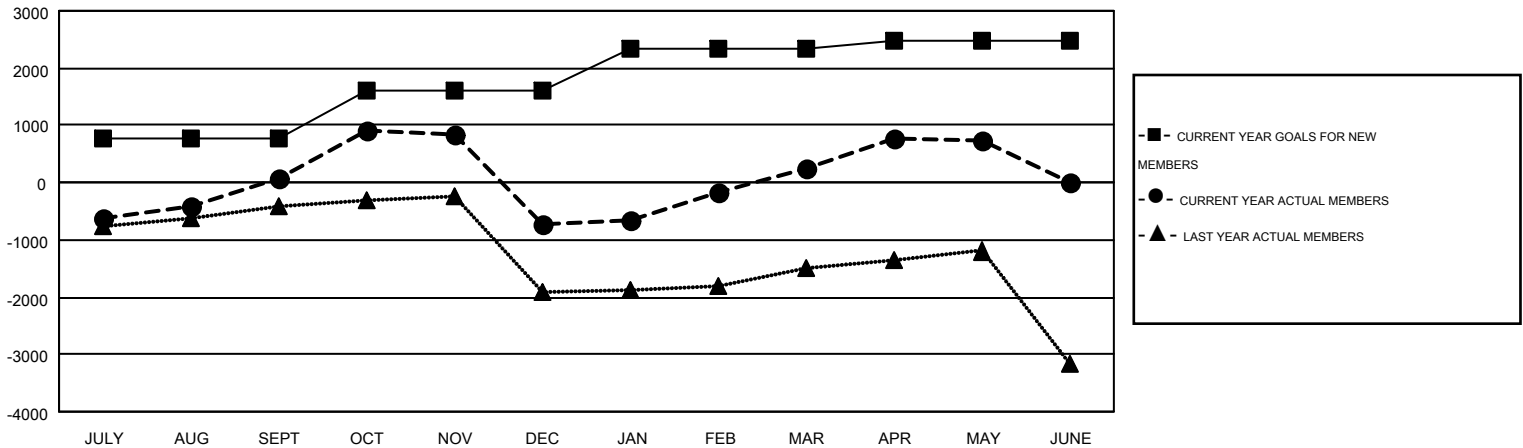
GMT CA 6

| Clubs | | | | | Members | | | | |
|-----------------------|---------------|-----------|---------------|---------------|-----------------------|-----------------|-------------------------------|-----------------|---------------|
| RESULTS FOR 2014-2015 | | | | | RESULTS FOR 2014-2015 | | | | |
| QUARTER | NEW CLUB GOAL | NEW CLUBS | DROPPED CLUBS | NET GAIN/LOSS | QUARTER | NEW MEMBER GOAL | CHARTER AND NEW MEMBERS ADDED | DROPPED MEMBERS | NET GAIN/LOSS |
| JULY/AUG/SEPT | 19 | 23 | 5 | 18 | JULY/AUG/SEPT | 761 | 1,428 | 1,350 | 78 |
| OCT/NOV/DEC | 15 | 13 | 66 | -53 | OCT/NOV/DEC | 852 | 1,564 | 2,363 | -799 |
| JAN/FEB/MAR | 13 | 20 | 11 | 9 | JAN/FEB/MAR | 715 | 1,666 | 690 | 976 |
| APR/MAY/JUNE | 7 | 9 | 3 | 6 | APR/MAY/JUNE | 145 | 1,278 | 791 | 487 |

GOALS AND ACTUAL NEW CLUBS CUMULATIVE



GOALS AND ACTUAL MEMBERS CUMULATIVE



| | | | |
|------------------------|---|----------------------------|-----------------|
| DROPPED CLUBS: 85 | 605 CLUBS OF 1030 ADDED 1 OR MORE NEW MEMBERS | <u>GENDER DISTRIBUTION</u> | |
| <u>DROPPED MEMBERS</u> | | MALE | 23,390 (73.46%) |
| DECEASED | CLICK HERE FOR HEALTH ASSESSMENT DATA | FEMALE | 8,451 (26.54%) |
| CLUB CANCELLED | | FAMILY UNIT MEMBERS | 14,938 |
| OTHER | | HEAD OF HOUSEHOLD | 6,259 |
| TOTAL | | NON-HEAD OF HOUSEHOLD | 8,679 |